

IMPACT ACOUSTIC®



# Soundproof *Chatpods*

Made in Switzerland from upcycled materials



## Jeffrey Ibañez, *Designer*

Studies have found that in open-plan offices, contrary to the actual idea, people communicate less with each other: direct conversations are declining and e-mail activity is increasing instead.

Designer and architect Jeffrey Ibañez had the vision to change this: What if we gave people working in open-plan offices more privacy or a special protected space to think freely? How can we address the massive climate and resource problems on our planet and still create a high-quality product? The idea of the Chatpod was born.

A truly sustainable product, made in Switzerland from renewable resources, with the aim of improving quality in offices around the world.

## Materials

For the production of our meeting boxes, we use 97% recycled materials such as cardboard, sawdust, rubber or recycled PET bottles. The Chatpod can be fully recycled at the end of its life cycle.

## Acoustics

We are experts in room acoustics. The interior of the Chatpod is soundproof, while the exterior reduces echoes, background noise and reverberation in the open office. So as a side effect, it also increases the sound quality and well-being in the surrounding office environment.

## Flexibility

The acoustic box can be easily moved and reconfigured according to individual needs. The Chatpods can be easily expanded in a modular way: For example, a meeting box for two people becomes a meeting box for four people in just a few steps thanks to the flexible frame system, or can be expanded with accessories such as monitors, whiteboards or other work utensils. Our meeting boxes are available in both standing and sitting configurations.

## Colours

The exterior of each Chatpod adapts to any office environment thanks to the carefully curated colour palette of 28 colours. Choose from carefully curated colours from our ARCHISONIC® collection. The frame colour is also customisable on request, here you choose from 30 different colours to coat the wood.

## Assembly

The components of the Chatpods are delivered pre-assembled. Thanks to simple assembly instructions, on-site assembly can easily be carried out by two members of the facility management staff or other persons with some manual dexterity. Our standard configuration is assembled and ready for use in just 20 minutes.

## Production

All Chatpods are manufactured in central Switzerland to the highest quality standards. The production of individual parts is carried out in cooperation with local workshops and sitftions for professionals with support needs.



# Built from *recycled* materials



## The most *sustainable* product on the market

The chassis of our pods is made of several layers of super-light cardboard, which give the Chatpod its clean and timeless shape. A look that is further enhanced by an outer layer made from recycled PET bottles.

The same recycled PET bottles are also used for the felt-like interior finish, which provides Chatpod guests with excellent acoustics and absorption of outside noise.

A frame made of processed sawdust makes the Chatpod reliably robust, while the connectors are made of recycled rubber.

We upcycle materials for the construction of our pods and later recycle them again after their service life has expired. This way, we ensure that as few resources as possible are consumed.

Our entire plant is heated with production waste and our machines are powered by clean water energy.

## *Social* commitment

The Chatpod is manufactured and assembled in Switzerland in collaboration with professionals in need of support. In the fight against the use and pollution of single-use plastic, we support the global Trash Hero movement, a volunteer initiative.



# The future of the workplace is available in five sizes

## Chatpod 185

Compact telephone booth with space for one standing person. Ideal for short phone calls Video calls or short focus breaks.



## Chatpod 300

Thanks to the height-adjustable table, you always have the perfect position for every task. Ideal for concentrated and focused work.







## Chatpod 350

The solution for two-person conversations and short meetings. The benches are equipped with acoustic upholstery.

## Chatpod 700

Our most flexible configuration with space for up to four people, also available as a version with a high table.





## Chatpod 1200

Our largest Chatpod seats up to six people and is available with flexible furniture, for both seated and standing conversations. A built-in monitor for presentations can be attached as well as a magnetic whiteboard. Of course, the box has a built-in power socket and USB ports.

## Maximum *flexibility*

Our Chatpod is a soundproof telephone booth or meeting room for calls and short meetings. Strategically designed with ergonomics, simplicity and sustainability in mind. The booth is available in seven sizes and eleven configurations to ensure a flexible set-up in any office space, no matter how small or large.

The acoustic box can be easily moved and reconfigured to suit individual needs. The Chatpods can be easily expanded in a modular fashion. A module can be individually configured and ordered from 1 to 2.4 metres wide. The depth of the pod can be extended endlessly. Thus, a meeting pod for two people becomes a meeting pod for four people in just a few steps, and even an extension of the large pod for six people is possible at any time.



# Unique features



- 1 Automatic ventilation system
- 2 LED lighting system with focused light beam from Bartenbach
- 3 Acoustic cladding made of certified ARCHISONIC® material
- 4 Magnetic whiteboard and fixture for monitor\*
- 5 Tinted glass door and windows for more privacy
- 6 High quality furnishing with various configurations and acoustic upholstery
- 7 Built-in power socket and various USB ports (type A and C)
- 8 Black wooden frame, on request in additional 30 different colours
- 9 28 selectable colours for the acoustic interior and exterior cladding
- 10 Optional adjustment of the patterns in the acoustic material (V-Cuts)

## Individual as you

The trend towards open workspaces brings with it a lot of challenges in an ever-changing world of work: Lack of privacy, constant interruptions and lack of supportive spaces for focused work are the most common setbacks of open work environments.

Ultimately, this leads to reduced productivity of employees and teams. To meet these high demands and increase well-being and productivity in the office, our pods have unique and high-quality features.

*\*optionally available*

Overview

	185	300	350	700	1200		
Dimensions in cm (width x depth x height)							
Outer dimensions	1020 x 935 x 2290	1600 x 1200 x 2290	2000 x 935 x 2290	2000 x 1830 x 2290	2400 x 2730 x 2290		
Inner dimensions	790 x 850 x 2035	1370 x 1115 x 2035	1770 x 850 x 2035	1770 x 1745 x 2035	2170 x 2645 x 2035		
Weight	~240kg	~360kg	~450kg	~840kg	~1400kg		
Configuration							
Mode	Phone Call	Focus Work	One-On-One	Creative	Project	Meeting	Briefing
# of people	● (standing)	● (standing or sitting)	● ● (sitting)	● ● ● ● (sitting)	● ● ● ● (standing)	● ● ● ● ● ● (sitting)	● ● ● ● ● ● (standing)
Furniture							
Glazing	partially glazed on both sides, smoked glass	partially glazed on both sides, smoked glass	partially glazed on both sides, smoked glass	partially glazed on both sides, smoked glass	partially glazed on both sides, smoked glass	partially glazed on both sides, smoked glass	partially glazed on both sides, smoked glass
Electrification	1 x USB-C, 1 x USB-A, power socket 230V	1 x USB-C, 1 x USB-A, power socket 230V	1 x USB-C, 1 x USB-A, power socket 230V	1 x USB-C, 1 x USB-A, power socket 230V	1 x USB-C, 1 x USB-A, power socket 230V	1 x USB-C, 1 x USB-A, power socket 230V	1 x USB-C, 1 x USB-A, power socket 230V
Lighting	Focus by Bartenbach	Focus by Bartenbach	Focus by Bartenbach	Focus by Bartenbach	Focus by Bartenbach	Focus by Bartenbach	Focus by Bartenbach
Table / Benches	Table in metal (white), 500x300x750mm	incl. pneumatic height adjustment table 1080x585x630-1050mm	incl. table 500x600x750mm, incl. benches with acoustic upholstery	incl. table 1200x600x750mm, incl. benches with acus. upholstery	incl. high table 1200x600x1100mm	incl. table 2000x600x750mm, incl. benches with acoust. upholstery	incl. high table 2000x700x1100mm
Flooring	Carpet	Carpet	Carpet	Carpet	Carpet	Carpet	Carpet
Assembly							
Time	20 min	30 min	45 min	90 min	90 min	120 min	120 min
# of people	● ●	● ●	● ● ●	● ● ●	● ● ●	● ● ●	● ● ●
Article No.							
Black	961.10.442.000.50	963.10.442.000.50	964.10.442.000.50	965.10.442.000.50	966.10.442.000.50	967.10.442.000.50	968.10.442.000.50
Powder-coated	961.10.442.000.20	963.10.442.000.20	964.10.442.000.20	965.10.442.000.20	966.10.442.000.20	967.10.442.000.20	968.10.442.000.20
Price							
Black	9'025.00 EUR	13'775.00 EUR	16'150.00 EUR	23'750.00 EUR	22'800.00 EUR	33'725.00 EUR	32'300.00 EUR
Powder-coated	9'500.00 EUR	14'250.00 EUR	16'625.00 EUR	24'225.00 EUR	23'275.00 EUR	34'200.00 EUR	32'775.00 EUR





## High class *soundproofing*

### Built by *experts*

As specialists in room acoustics, we know very well how to put noise on mute. Our pods are carefully designed and built to ensure the greatest possible sound insulation.

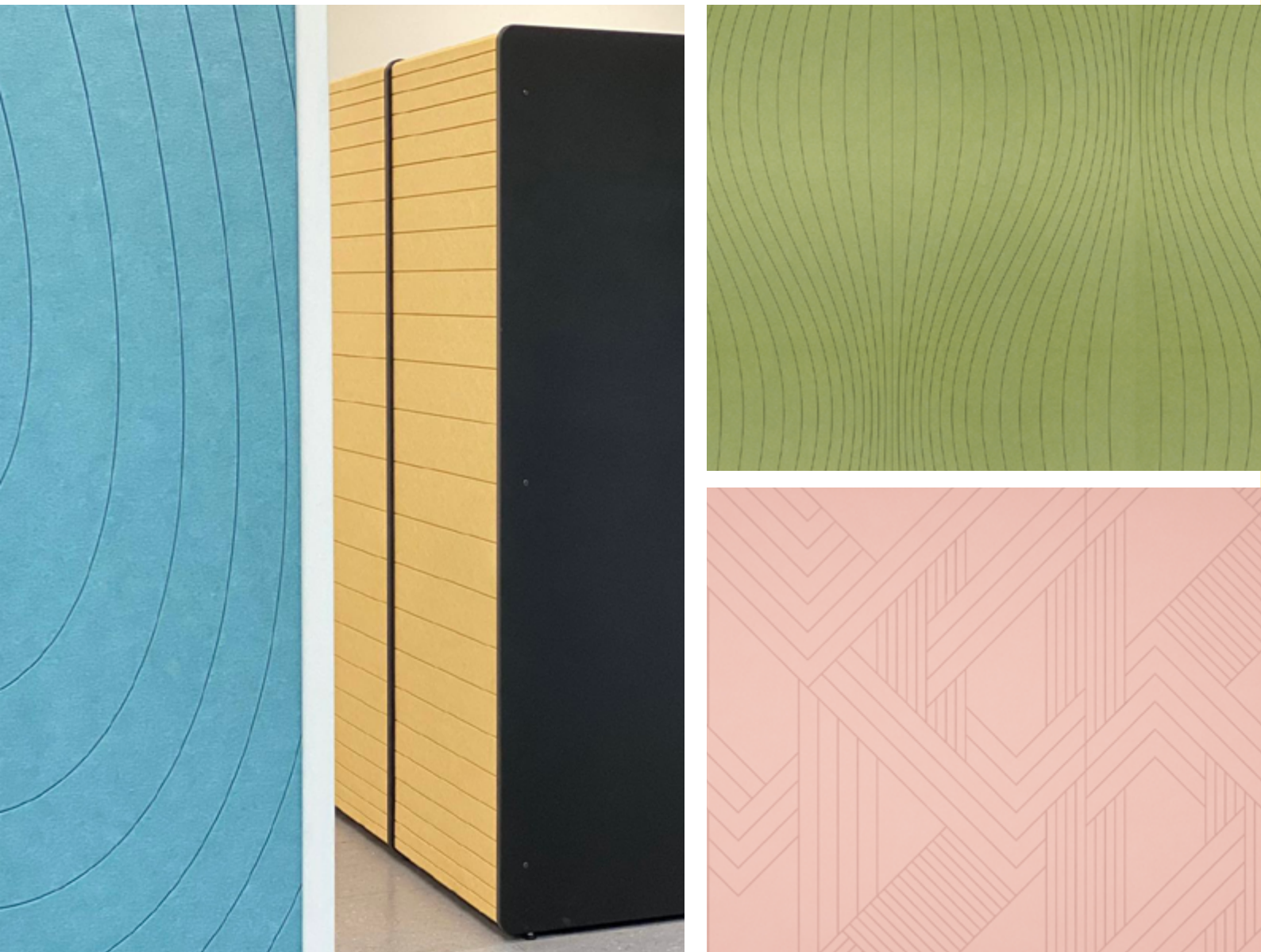
Private conversations do not penetrate from the cabin to the outside and office noise is not perceptible inside. The perfect basis for a pleasant working atmosphere.

The additional acoustic exterior cladding of the Chatpod also improves the acoustics in the open-plan office.

### Tested by *scientists*

Together with the Lucerne University of Applied Sciences and Arts (HSLU), we have scientifically tested our Pods for sound insulation. The speech level reduction is 28.2 dB according to ISO23351-1, which allows the pods to be placed in the immediate vicinity of office workplaces without conversations from the cabin being perceptible to the outside.

**HSLU** Hochschule  
Luzern



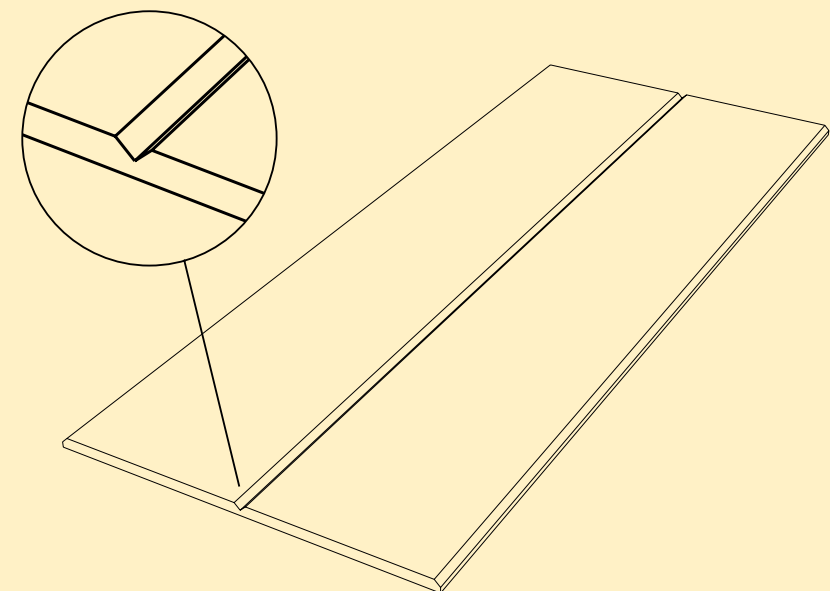
## *Individual* interior and exterior cladding

### Masters of the *V-Cuts*

Looking for an even more personal or individual touch for your Chatpod? No problem! In addition to the versatile colour palette, we also offer you countless patterns for the acoustic exterior and interior cladding.

Our parametric design patterns, which we use at Impact Acoustic for wall cladding and other high-performance acoustic products in the architectural sector, are also available for your Chatpod.

In addition to existing patterns, you also have the option of integrating your own design, for example a company logo, into the acoustic wall cladding. Talk with us!



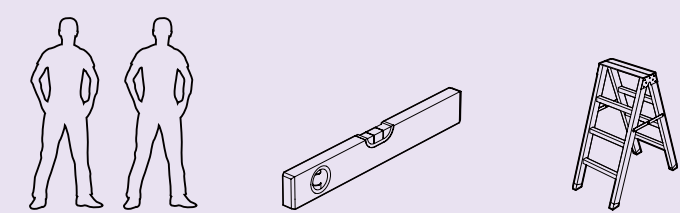




# Simple and quick *assembly*

## Build and *chat*

All Chatpods are supplied with easy-to-follow assembly instructions. The components of the pods are pre-assembled and ready-made before shipping. On-site assembly can easily be carried out by two members of the facility management staff or other persons with manual skills. All that is needed is a small ladder and a spirit level.



The pods are easily put together directly in the office. Each Chatpod always consists of two side walls, a base and a lid. The front and back give the Chatpod the necessary stability.

Our smallest configuration, the telephone booth (Chatpod 185), is already assembled and ready for use in around 20 minutes.

## Assembly times

Configuration	Time
Chatpod 185	20 minutes
Chatpod 300	30 minutes
Chatpod 350	45 minutes
Chatpod 700	90 minutes
Chatpod 1200	120 minutes





## **Rapid disinfection** *without wiping*

### **Hygienic *and* clean**

PET fibres do not provide a breeding ground for germs and therefore have antibacterial properties; the same applies to the glass and metal parts of the booths. The ARCHISONIC® material consists of solid-coloured fibres that do not fade even when aggressive cleaning agents and disinfectants are used. Accordingly, not only alcohols or aldehydes, but also products with active chlorine are suitable for disinfecting the acoustic cladding of the Chatpods.

Due to the strong odour of products containing chlorine, we recommend disinfectants with a fast-drying alcohol solution (75%) for daily cleaning of the Chatpod and disinfectants with a long-term effect (e.g. Pantasept disinfectant spray) for weekly cleaning.

On request, we offer Microban® antimicrobial protection, which prevents bacteria and fungi from thriving on our material.





# Various *colour combinations*

## ARCHISONIC®

ARCHISONIC® is our acoustic absorber, which we manufacture from recycled PET bottles. This enables us to transform millions of bottles a year into a high-quality and sustainable building material.

We have worked with Colour Hive from London to develop a carefully curated colour palette consisting of eight colour families. These were created as a tool for designers and architects to express their design intent for each project. The entire collection comprises 28 colours.

Choose the interior and exterior colour of the acoustic material from our colour palette for your Chatpod and create your individual and unique design object. There are no limits to your imagination.

### Frame colour

We deliver the Chatpod with a black frame colour as the default. Would you like an even more individual touch for your booth? Then we offer you a choice of 30 different shades of powder-coated wood.

**We will be happy to send you a free sample box on request so that you can assess our material in terms of texture and colour.**

Quiet Neutrals

These shades work in harmony with natural textural materials and soften industrial environments. From light to dark and cool to warm, these are the foundations of any scheme where longevity and a mood of calm is desired.



Snow White  
500



Cloud  
103



Smoke  
442



Ground  
108



Charcoal  
542



Slate  
444



Raven  
550

Warm Naturals

Combinations of lighter toned neutrals and pinks have a gently soothing and restorative effect while the more saturated hues make perfect environments for relaxation.



Warm Stone  
105



Milk  
404



Shell Pink  
102



Soft Coral  
516



Terracotta  
239



Garnet  
724

Living Greens

From the cool greens of forests to the yellowed aspect of young wheat, we see Living Greens breathing life into indoor spaces, and an essential palette for the future. Use in tonal layers brings the depth and diversity of green, while a single note can provide an amplifying backdrop to a biophilic space.



Spearmint  
706



Succulent  
712



Moss  
439



Nordic Pine  
311



Grove  
317

Elemental Blues

These blues work perfectly both as familiar single hues and in effortless tonal layers to create an immersive environment for focus or restoration.



Ice Blue  
304



Winter Sky  
410



Marine Blue  
864



Pacific Ocean  
432



Midnight  
810



Soothing Pastels

With tonal duos of pink and blue and green, this perfectly balanced group is designed for peaceful plays on light and shade and playful contrast. While the lightest tones have a dreamlike quality, their deeper counterparts add a subtle grounding.



Shell Pink  
102



Soft Coral  
516



Ice Blue  
304



Winter Sky  
410



Spearment  
706



Succulent  
712

Elegant Darks

While colour can create a mood, it is the depth or lightness of a hue that truly defines the emotion. While each hue has the strength to stand alone, beautiful effects can be achieved with harmonized pairs.



Garnet  
724



Marine Blue  
864



Midnight  
810



Nordic Pine  
311



Raven  
550

Energetic Brights

There are no rules here with endless possibilities for clashing contrasts or surprising highlights. For a sophisticated use of energetic colour, take a single hue and colour match contrasting textiles and solid surfaces.



Pacific Ocean  
432



Moss  
439



Sunshine  
846



Electric Orange  
464



Hot Pink  
140



Grape  
540

Primary Play

The primary story happens when all three main colours are used together, with varied proportions creating differing moods. As with the Energetic Brights palette, combine with coordinating-coloured textiles and solid surfaces.



Snow White  
500



Charcoal  
542



Sunshine  
846



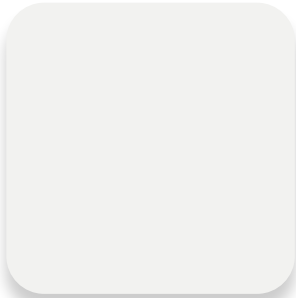
Poster Red  
662



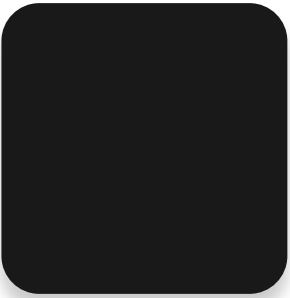
Marine Blue  
864

Frame colours  
Woodcoat®

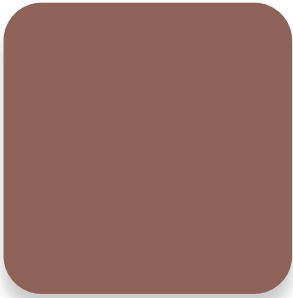
Woodcoat AG, based in the Bernese Oberland, specializes in the powder coating of wood. Choose the frame colour for your individual Chatpod from a pre-curated collection of 10 variants.



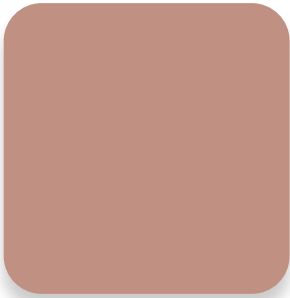
Traffic White  
RAL 9016



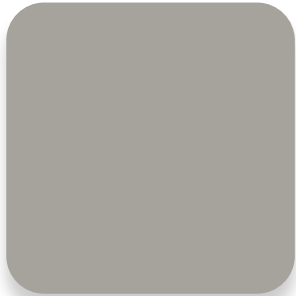
Black  
RAL 9005



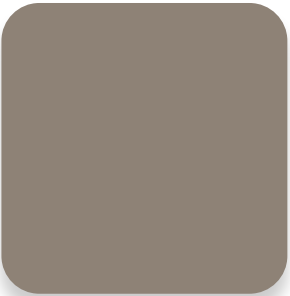
Savannah  
NCS S 5020-Y80R



Velvet Pink  
NCS S 3020-Y70R



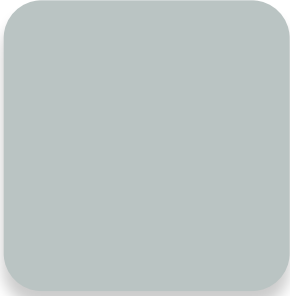
Warm Grey  
NCS S 3502-Y



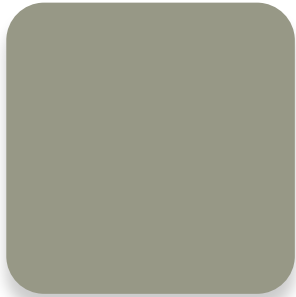
Morel  
NCS S 5005-Y20R



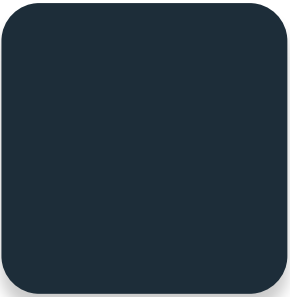
Smoke Blue  
NCS S 6010-R90B



Glacier  
NCS S 2005-B50G



Olive  
NCS S 4005-G80Y



Night Blue  
NCS S 8010-R90B

For correct colour determination, we recommend ordering a free sample box in advance.



**#We  
Make An  
Impact**